

# Quick Start Guide

## Fronius Smart Meter TS 65A-3



[manuals.fronius.com/  
html/4204260349](https://manuals.fronius.com/html/4204260349)

**FIND MORE  
INFORMATION**



<b>Technical Data - General</b>	
Nominal voltage (three-phase) / Operating range	208 - 400 V / 166,4 - 480 V
Nominal frequency / Tolerance	50 - 60 Hz / 45 - 65 Hz
Nominal / Maximum current	5 A / 65 A
Powerfactor range (EN/IEC 62053-21, EN/IEC 62053-23)	aktiv $\cos\phi$ 0.5 ind to 0.8 cap reaktiv $\sin\phi$ 0.5 ind to 0.5 cap
Permitted ambient temperature	from -25° to +65°C
Mounting	DIN rail 35 mm
IP range (EN60529)	IP51 / IP20 (Front / Connections)

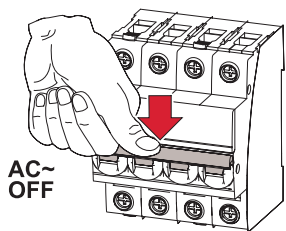
<b>Communication</b>	
Standard	RS485 - 3 conductors
Protocol	Modbus RTU
Min. Softwareversion	Datamanager 2.0: 3.16.1 / Fronius Symo Hybrid: 1.16.1 / Fronius GEN24: 1.12.1

<b>Screw terminal</b>	
Measuring input / neutral line	1 - 16 mm <sup>2</sup>
Output ( data communication)	min. 0,05 mm <sup>2</sup>
Recommended torque	Measuring input: max. 2,8 Nm Output: max. 0,4 Nm

Detailed, country-specific warranty terms are available on: [www.fronius.com/solar/warranty](http://www.fronius.com/solar/warranty)

## AC~

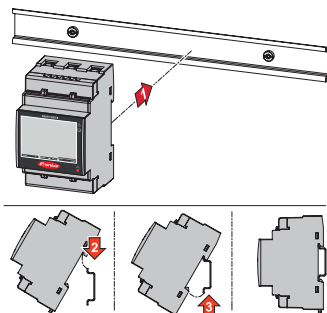
1



AC~  
OFF

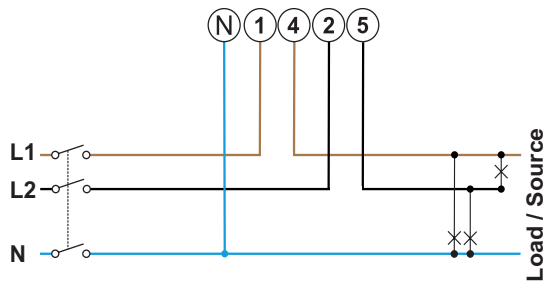
## Mounting

2



## Power Wiring

3a



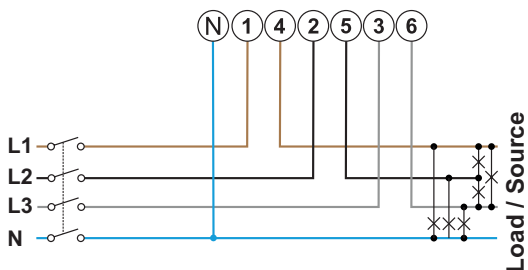
2 Phases, 3 Wires

CU Wire	
●	1-16 mm <sup>2</sup>
●	1-10 mm <sup>2</sup>

⊕	2,8 Nm
⊖	0,4 Nm

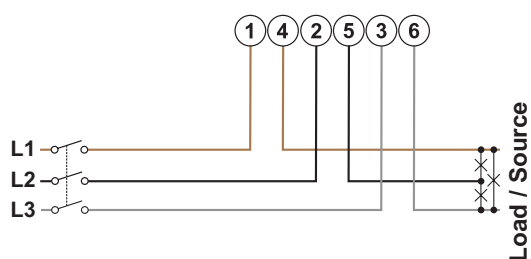
	In	Out
L1	1	4
L2	2	5
L3	3	6
N	N	N

3b



3 Phases, 4 Wires

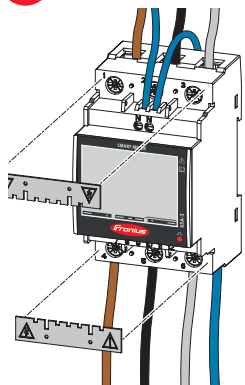
3c



3 Phases, 3 Wires

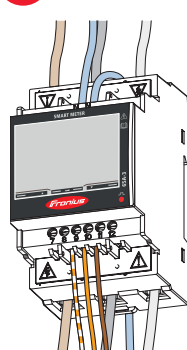
## Protective Covers

4



## Data Wiring

5



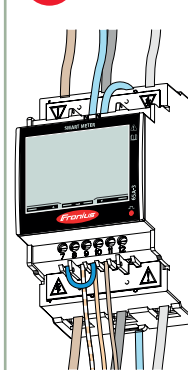
CU Wire  
(min CAT5)  
≥0,05 mm<sup>2</sup>

⊖  
0,4 Nm

SnapInverter		GEN24	
Smart Meter	Modbus	Smart Meter	Modbus
8	D+	8	M0+
9	D-	9	M0-
10	-	10	GND

## Terminating Resistor

6



CU Wire  
≥0,05 mm<sup>2</sup>

⊖  
0,4 Nm

Bypass (cable)	
T	M-
7	9

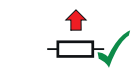
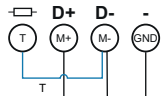
7



Manufacturer manual



Manufacturer manual



e. g. Ohmpilot, Battery



Inverter

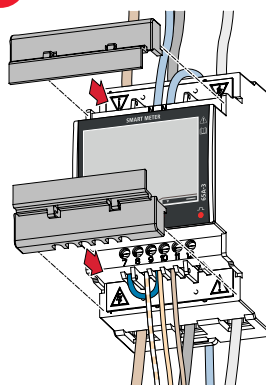


Smart Meter

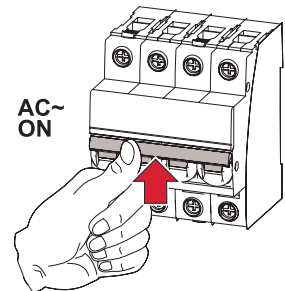
max. 300 m

## Close & Commissioning

8

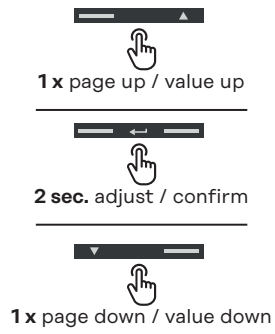


9

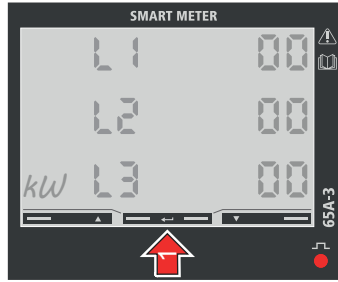


AC~  
ON

10

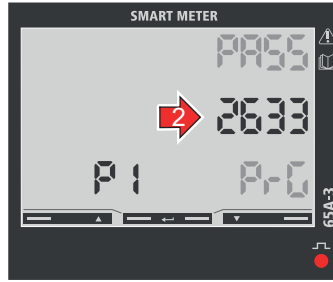


11



12

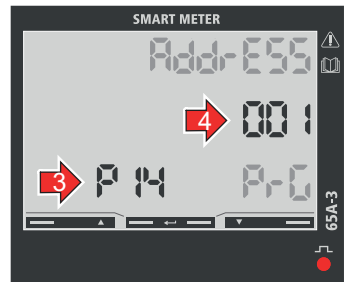
Password



Factory default: **2633**

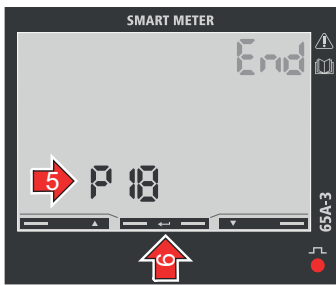
13

Modbus Address



Factory default: **001**

14



Exit

15

